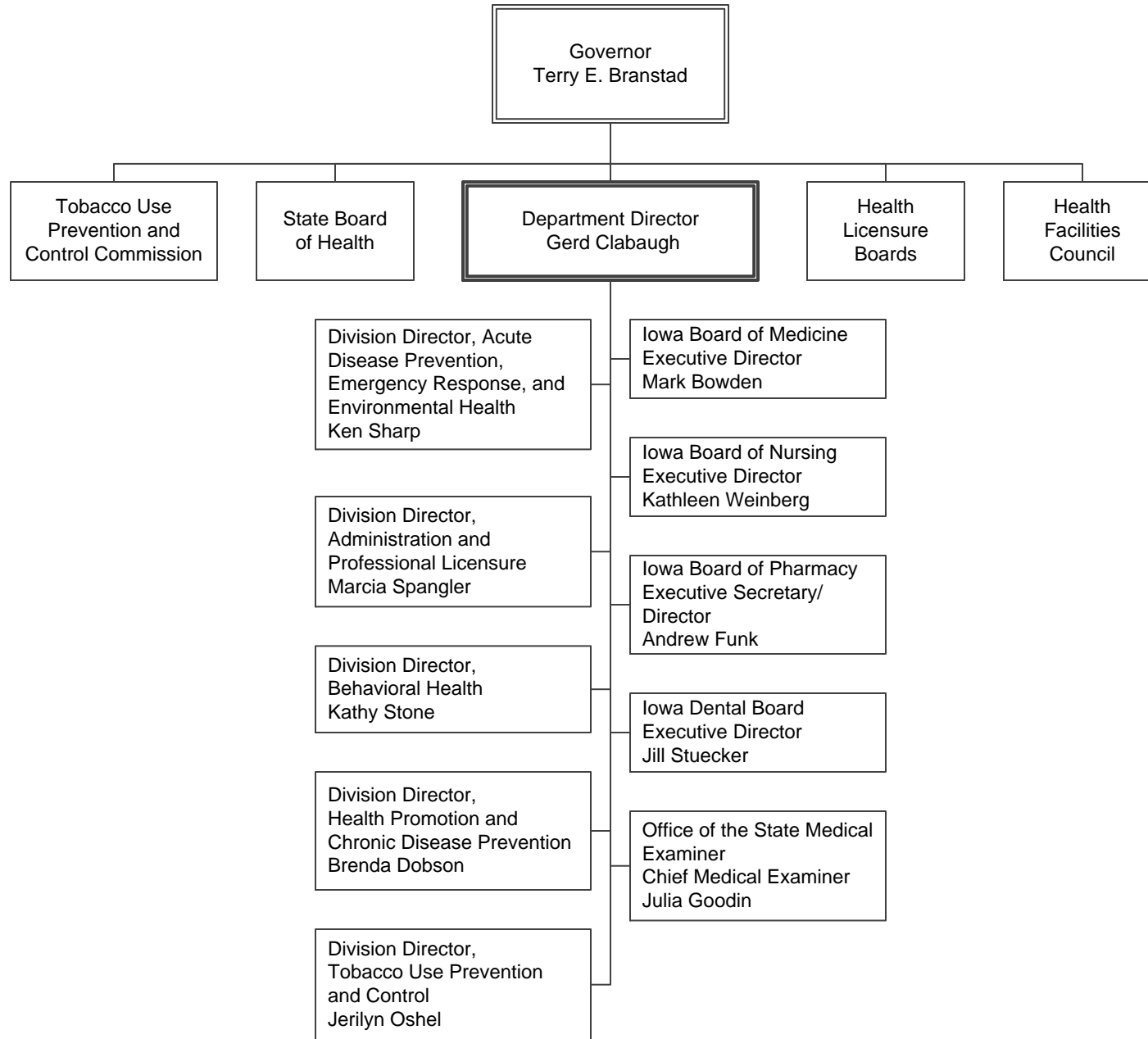


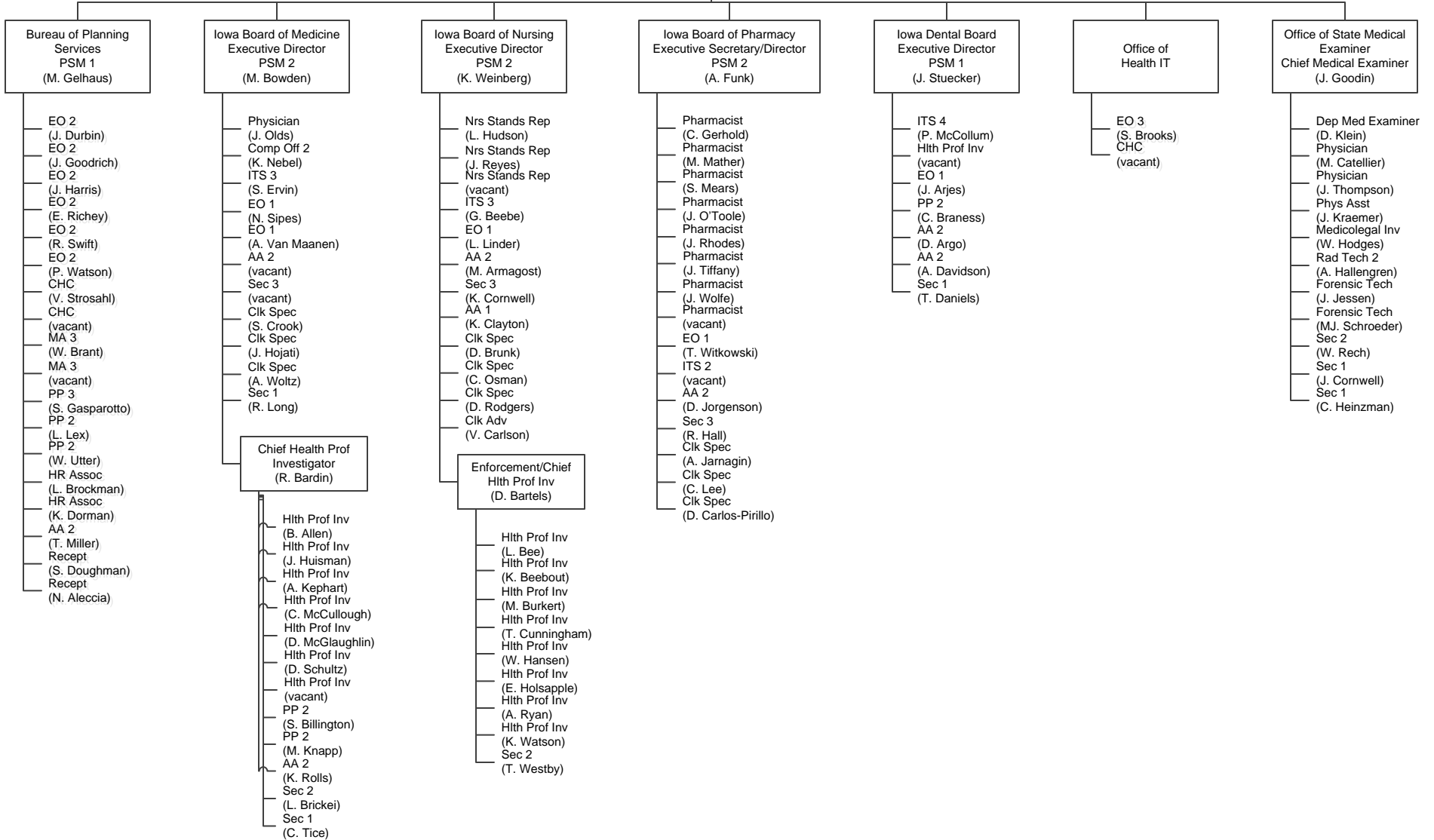
Iowa Department of Public Health



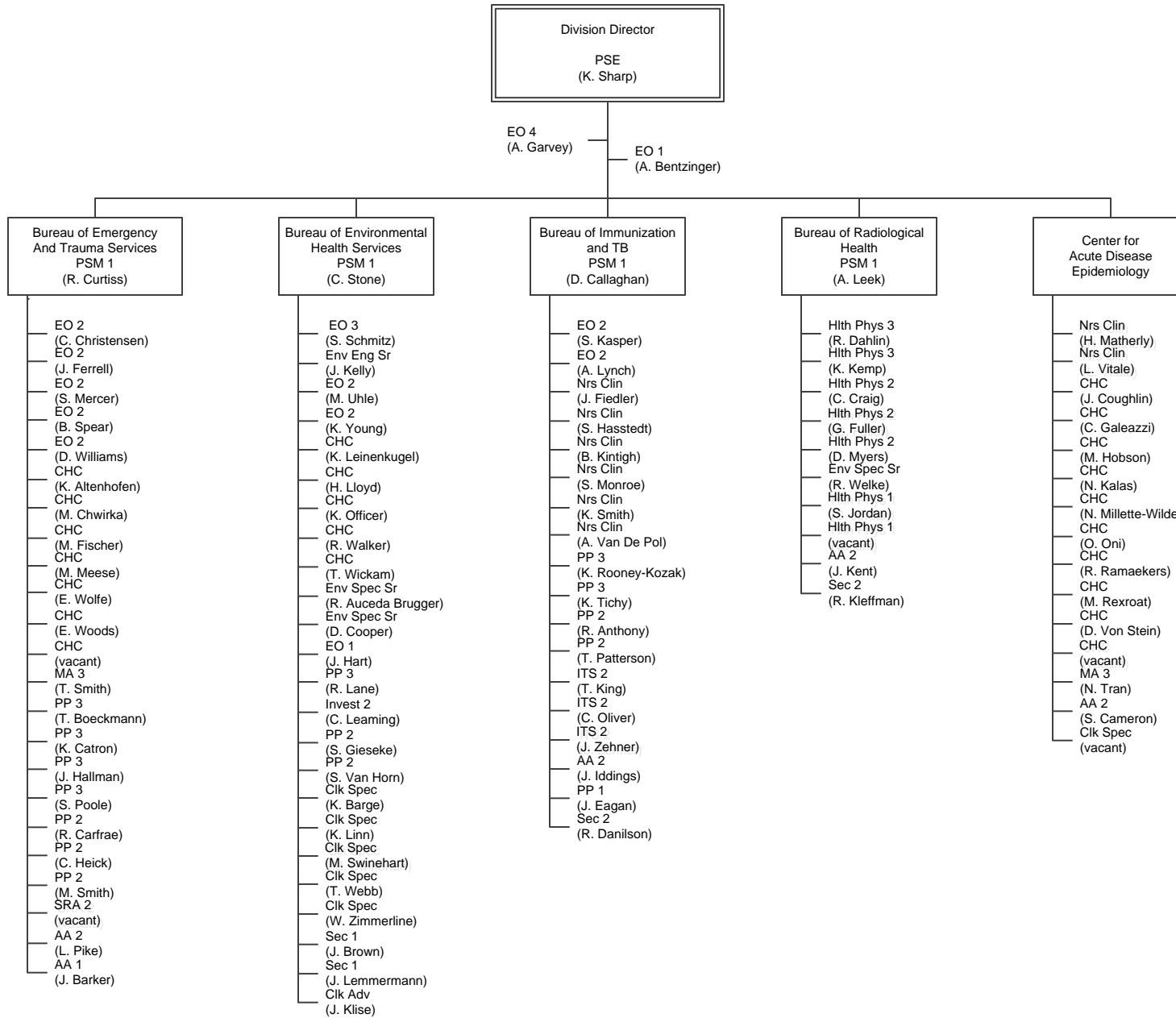
DIRECTOR'S OFFICE

Director of Public Health
Gerd Clabaugh

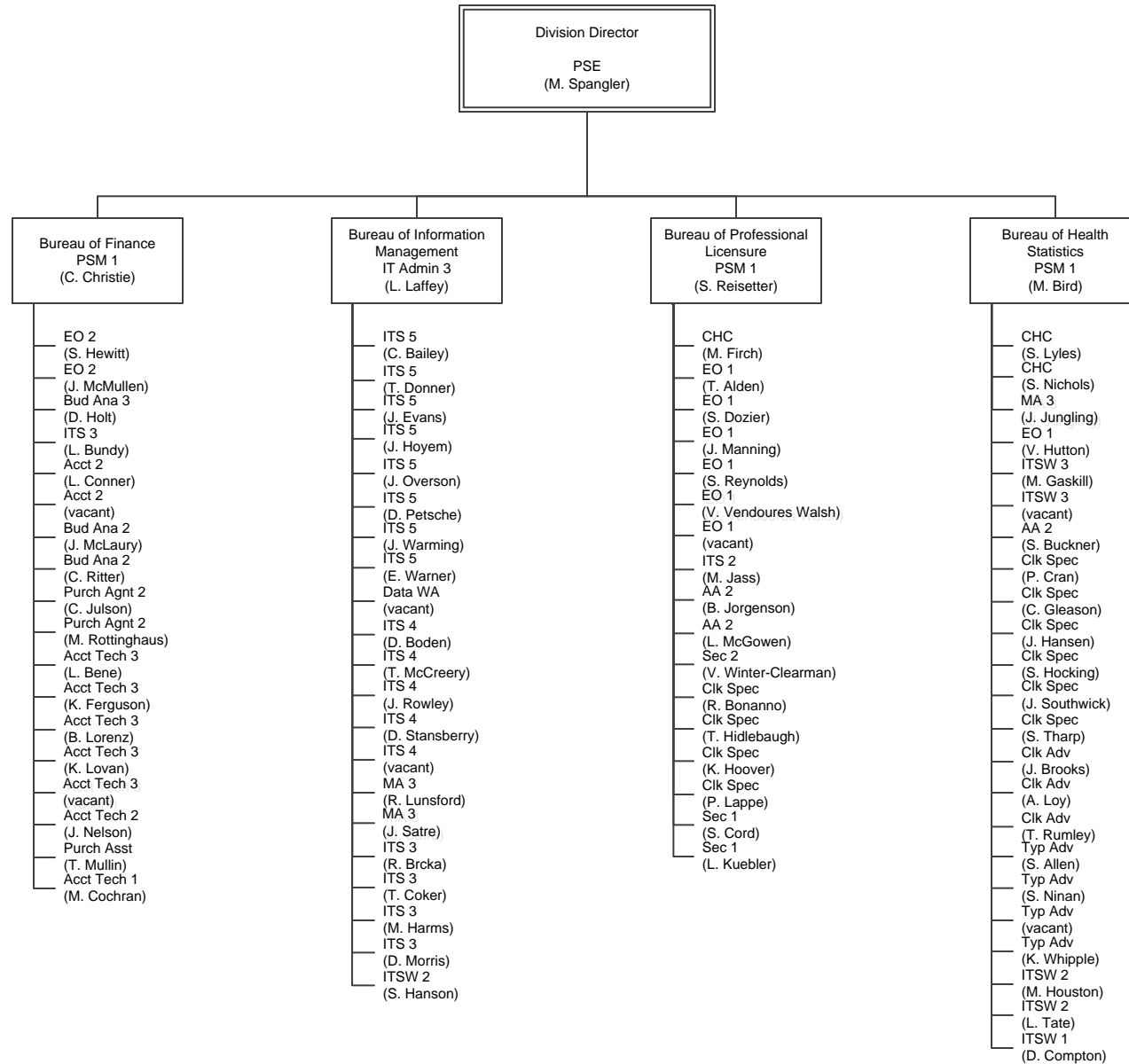
- EO 3 (P. Carver-Kimm) — State Epidemiologist & Medical Director (P. Quinlisk)
- EO 3 (D. Thompson) — Exec Sec (vacant)
- EO 1 (J. Caskey) — IS 2 (S. Briggs)



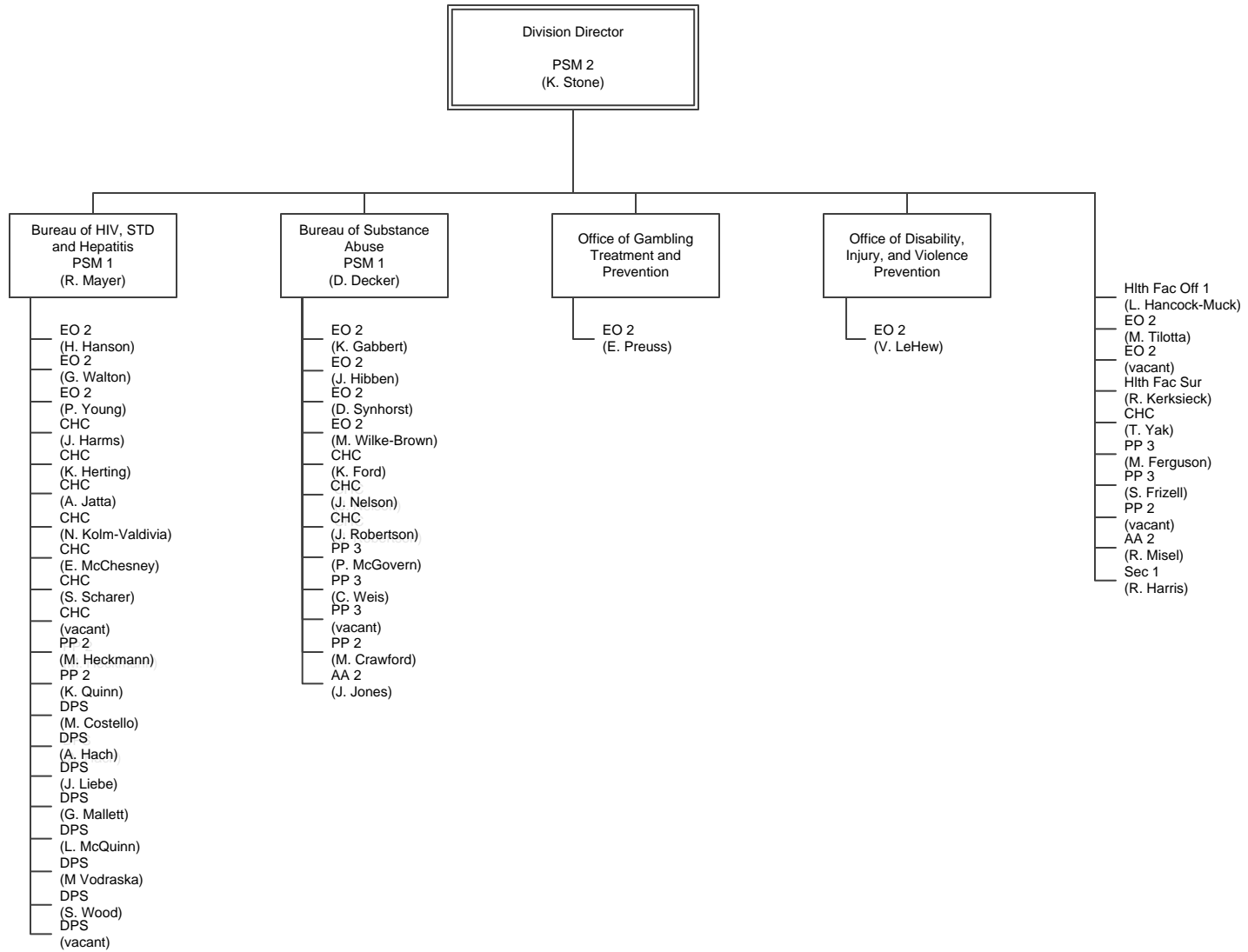
DIVISION OF ACUTE DISEASE PREVENTION, EMERGENCY RESPONSE, AND ENVIRONMENTAL HEALTH



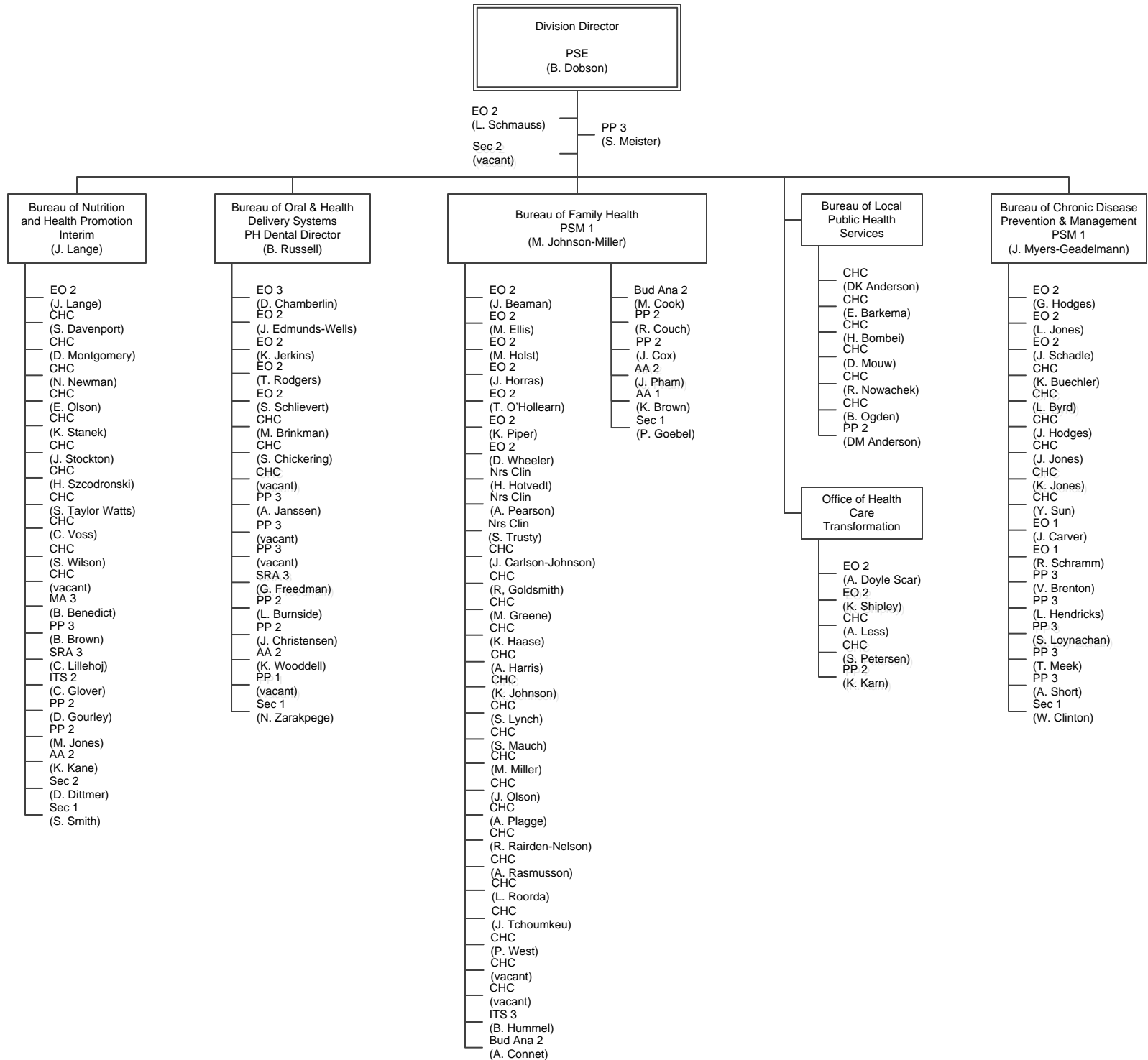
DIVISION OF ADMINISTRATION AND PROFESSIONAL LICENSURE



DIVISION OF BEHAVIORAL HEALTH



DIVISION OF HEALTH PROMOTION AND CHRONIC DISEASE PREVENTION



DIVISION OF TOBACCO USE PREVENTION AND CONTROL

Division Director
PSM 1
(J. Oshel)

- EO 2
(S. Prior)
- CHC
(M. Aucutt)
- CHC
(G. Buttermore)
- CHC
(R. Duchow)
- CHC
(J. Muldoon)
- CHC
(D. Owens)
- CHC
(D. Shepherd)
- CHC
(E. Vogt)
- PP 3
(S. Stursma)